



**PHILIPS**

dStream HeadSpine

MR coils

# High quality neuro imaging

dS HeadSpine coil for 1.5T and 3.0T systems with dStream

## Key benefits

- Digitization in the coil for increased SNR
- Fast and easy setup with cable-less connection of top coil
- Open visual field with mirror to enhance patient comfort

The dStream (dS) HeadSpine is an integrated coil solution for brain, spine, and total neuro related imaging. It includes the Head coil, combined with the FlexCoverage Posterior coil, integrated in the table, and Base.

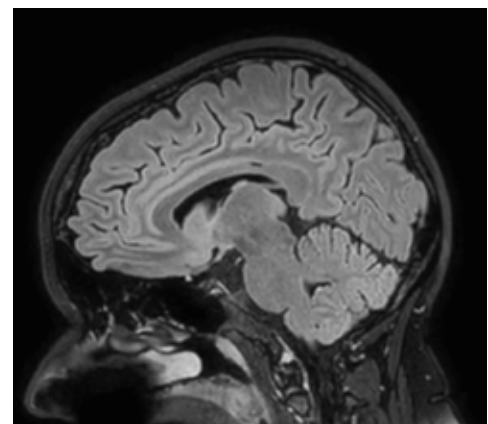
The dStream digital RF architecture enables an exceptional signal-to-noise ratio (SNR) through digitization in the coil and enhanced dS SENSE parallel imaging performance. An open visual field is provided with a mirror. On wide bore systems, the head section can be tilted to allow flexible positioning and enhance patient comfort.

# dStream HeadSpine coil

Coverage	30 cm (brain) 90 cm (total neuro)
Maximum number of channels	15 (brain) 52 (total neuro)
Main applications	Brain (total) spine Total neuro
Coil solution type	Integrated
Data sampling	dStream digital broadband
Coil connection	Cable-less connection of top coil
SENSE parallel imaging	dS SENSE enhanced parallel imaging performance
Other features	<ul style="list-style-type: none"> <li>- Mirror providing open visual field</li> <li>- Optional FlexTilt device enhances patient comfort (wide bore systems only)</li> </ul>



**Sagittal T2w TSE mDIXON**  
 - Total Spine  
 Water Only (left),  
 In Phase (right)  
 Resolution:  
 0.8 x 1.1 x 4.0 mm  
 Scan time: 4:25 min  
 Ingenia 1.5T  
 Courtesy: Aarhus  
 University Hospital,  
 Denmark



**Sagittal 3D BrainView FLAIR**  
 Resolution: 1.1 x 1.1 x 1.1 mm  
 Scan time: 4:34 min  
 Ingenia 3.0T

