



**PHILIPS**

mDIXON XD FFE

MR Clinical application

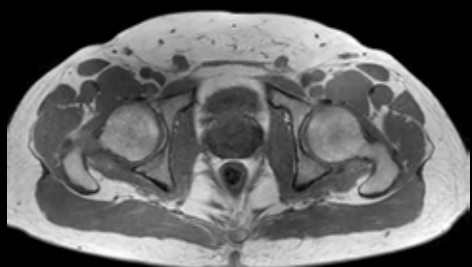
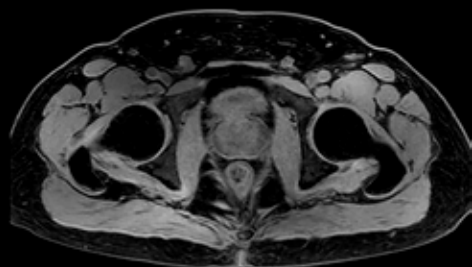
## Improve your **fat-free imaging performance**

**mDIXON XD FFE** provides more efficient fat-free imaging in routine scan times. Improve your fat-free imaging over large field-of-views and for high resolution imaging. With up to four image types in one single scan, including with or without fat suppression contrasts, mDIXON XD FFE will enable you to enhance your imaging strategies by simplifying your routine FFE procedures.

# mDIXON XD FFE

Field strength	1.5T, 3.0T.
Main applications	Abdomen, Pelvis, HeadNeck, Cardiac. Also available for other anatomies.
Sequence	FFE, including 2 echoes with unrestricted echo times.
Fat suppression	mDIXON XD allowing improved fat-free imaging over large 400-500 mm FOV and for sub-millimetric resolution <sup>1</sup> due to unique 7-peak spectral fat model and improved B0 correction.
Image types	Acquire up to four image types in one single scan (water only, in phase, out phase, fat only).
Speed	Leverages the efficient dS SENSE parallel imaging technology to provide superior speed performance. More efficient, faster scanning due to the unrestricted echo-time (TE) approach in mDIXON XD allowing more freedom in protocol optimization.
Image quality	Optimal SNR due to dStream's digitization at the patient and mDIXON XD's unrestricted echo-time (TE) approach, allowing more freedom in protocol optimization.

<sup>1</sup> Compared to the standard mDIXON algorithm



mDIXON XD - T1w FFE  
Water only and in phase  
1.5 x 1.7 x 1.5 mm, 0:18 min  
Ingenia 3.0T



mDIXON XD - T1w FFE  
Water only, post-gado  
1.4 x 1.9 x 3.0 mm, 0:12 min  
SmartPath to dStream 3.0T