



PHILIPS

dStream
HeadNeckSpine

MR coils

Integrated solution for **neuro and neuro-vascular exams**

dS HeadNeckSpine coil for 1.5T and 3.0T systems with dStream

Key benefits

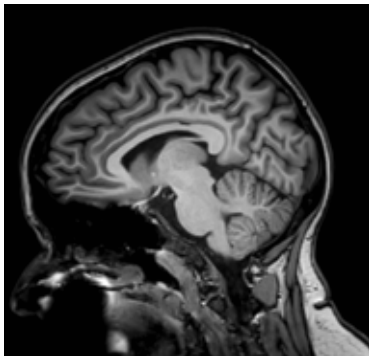
- Digitization in the coil for increased SNR
 - Improved coil positioning and SNR due to flexible neck flap
 - Fast and easy setup with cable-less connection of top coil
-

The dStream (dS) HeadNeckSpine is an integrated coil solution for brain, spine, total neuro, and neuro-vascular related imaging. It includes the HeadNeck coil, combined with the FlexCoverage Posterior coil, integrated in the table, and Base.

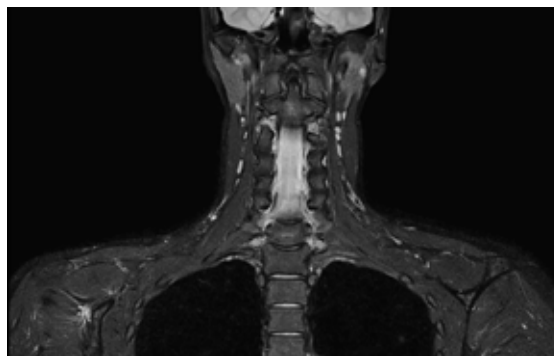
The dStream digital RF architecture allows an exceptional signal-to-noise ratio (SNR) through digitization in the coil and enhanced dS SENSE parallel imaging performance. An open visual field is provided with a mirror. On wide bore systems, the head section can be tilted to allow flexible positioning and enhance patient comfort.

dStream HeadNeckSpine coil

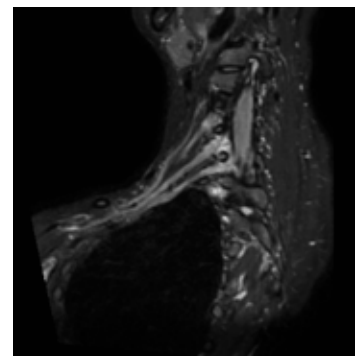
Coverage	45 cm (HeadNeck) 90 cm (total neuro)
Maximum number of channels	20 (HeadNeck) 52 (total neuro)
Main applications	Brain (Total) spine Total neuro Neuro-vascular
Coil solution type	Integrated
Data sampling	dStream digital broadband
Coil connection	Cable-less connection of top coil
SENSE parallel imaging	dS-SENSE enhanced parallel imaging performance
Other features	<ul style="list-style-type: none"> - Mirror providing open visual field - Optional FlexTilt device enhances patient comfort (wide bore systems only)



Sagittal 3D T1w FFE - Brain
Resolution: 1.0 x 1.0 x 1.2 mm
Scan time: 5:29 min
Ingenia 3.0T



Coronal T2w TSE mDIXON (Water only) - HeadNeck
Resolution: 0.8 x 1.0 x 3.0 mm
Scan time: 5:05 min
Ingenia 1.5T
Courtesy: Clinique Generale Beaulieu, Geneva, Switzerland



Coronal 3D STIR (oblique reformat) - HeadNeck
Resolution: 1.2 x 1.2 x 1.2 mm
Scan time: 7:27 min
Ingenia 1.5T
Courtesy: Clinique Generale Beaulieu, Geneva, Switzerland

