



PHILIPS

StarQuant

MR software

Non-invasive assessment of **myocardial tissue characteristics**

Philips StarQuant for 1.5T and 3.0T systems

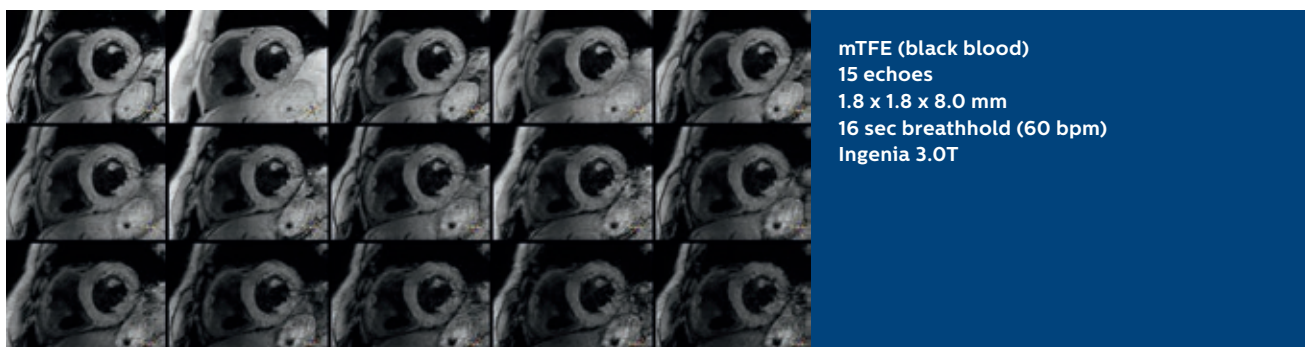
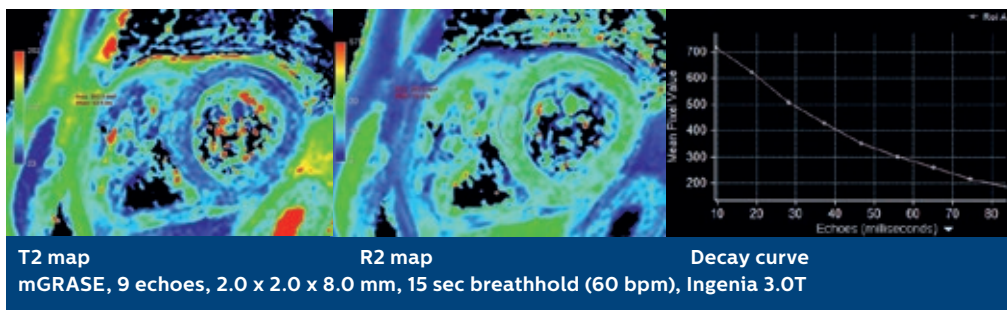
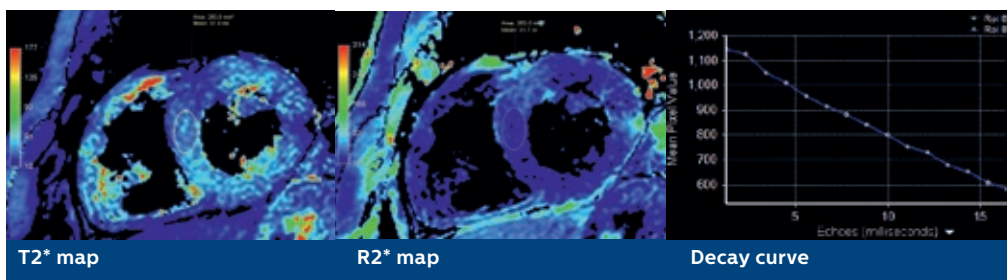
Key benefits

- Fast, single breathhold scan
 - T2/T2* and R2/R2* values in different regions of the myocardium
-

With a fast, single breathhold scan, StarQuant gathers information to provide you with comprehensive graphs and quantitative maps that visually depict not only T2 and R2 values, but also the T2* and R2* values in different regions of the myocardium. StarQuant is compatible with dS SENSE for superior Premium speed¹

StarQuant

	Technical characteristics	Additional information
Main applications	Cardiac	Also available for other anatomies
Acquisition	mFFE, GraSE	
Number of echoes	6 or more	
Image types	T2*/R2* and T2/R2 relaxation maps	
Field strength	1.5T and 3.0T	
Parallel imaging	Compatible with dS SENSE	Leverages the efficient, high SNR, dS SENSE parallel imaging technology



Contact Philips for a trial key⁽¹⁾

⁽¹⁾ Only for systems with release 5 onwards

© 2015 Koninklijke Philips N.V. All rights reserved. Specifications are subject to change without notice. Trademarks are the property of Koninklijke Philips N.V. (Royal Philips) or their respective owners.



How to reach us
Please visit www.philips.com/healthcare
healthcare@philips.com