



PHILIPS

Mother & Child Care

ECG monitoring

A lasting solution for your most fragile patients

The delicate, fragile nature of the smallest patients in the NICU calls for specialized care right from the start. Philips NeoLead electrodes offer stable and reliable ECG monitoring designed for the needs of neonates and infants in the humid environment of an incubator. Each NeoLead is designed specifically to stay attached for five to seven days while being gentle on skin, providing consistent monitoring.

Philips NeoLeads support developmental care practices with features to underpin parental interaction, a vital step for both parents and child at a crucial stage of development.¹

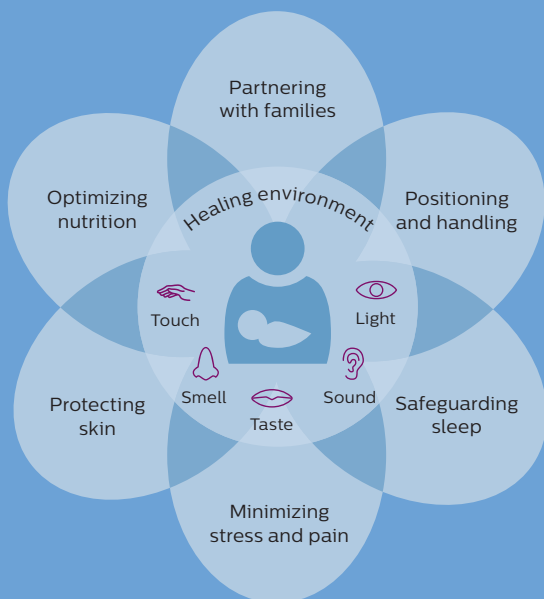
Key advantages

- Provides clear and consistent ECG monitoring for up to seven days without replacing electrodes, helping to limit sleep interruptions and supply costs
- Designed specifically to stay in place in a high-humidity incubator environment while being kind to the delicate skin of vulnerable neonatal patients
- Supports developmental care practices and parental interaction in a critical period of a baby's life

Gentle yet long lasting

Featuring a unique hydrocolloid border that gently and effectively adheres to delicate skin, NeoLeads provide up to seven days of electrode adherence for uninterrupted ECG monitoring designed with Integrative Developmental Care in mind.

- **Unique electrode** is constructed to stay on in an incubator's highly humid environment for five to seven days, limiting needless interruptions and excess costs that may result when the electrodes fall off.
- **Multiple sizes treat the full range of neonatal patients** – even those born as early as 24 weeks from gestation.
- **Hydrocolloid adhesive border** withstands high humidity, yet is gentle on fragile neonatal skin, adhering for the full duration.
- **Hydrogel center** is surrounded by adhesive edge, designed to limit the spread of the oozing gel that can stick to bedding or clothing.
- **60 cm (24 in) wire** allows parents to hold their baby, limiting the interference of monitoring and supporting the developmental practice of kangaroo care.
- **Not manufactured with natural rubber latex, phthalates, DEHP or BPA** to be gentle on the most sensitive skin.

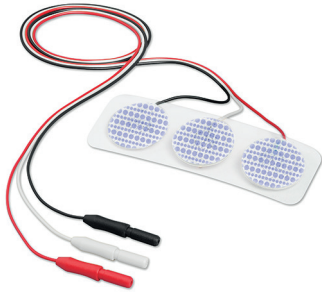


Committed to Integrative Developmental Care

This evidence-based framework for care provides clinicians with innovative solutions designed especially to support and nurture each mother and baby. The hydrocolloid border is designed to be gentle on skin while providing long-lasting adhesion, and limiting the interruptions to the baby's sleep. A long lead wire allows parents to practice kangaroo care, an important developmental care technique crucial to parental-infant bonding during the early periods of a baby's life.²

Philips NeoLead electrodes

All Philips NeoLead electrodes are pre-wired and designed to provide reliable ECG tracings and sensor stability.



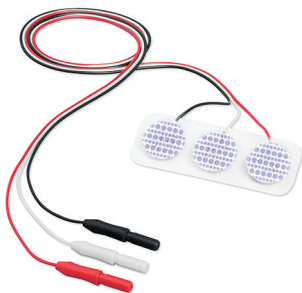
Philips NeoLead Standard (989803183101)

- Size: 25 mm (1 in) circle



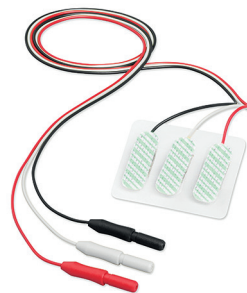
Philips NeoLead Radiolucent (989803183121)

- Size: 25 mm (1 in) circle
- Radiolucent, will not appear on X-ray images



Philips Mini NeoLead (989803183081)

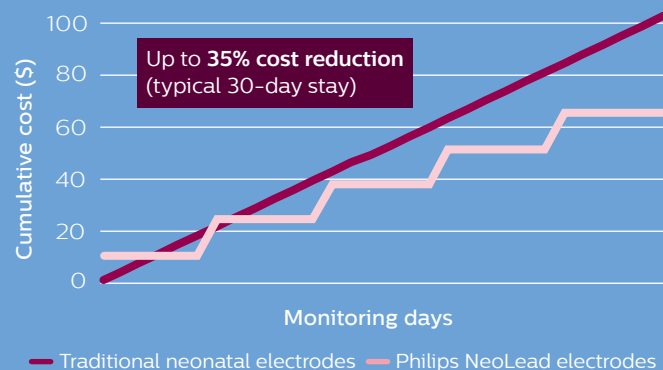
- Size: 19 mm (.75 in) circle
- 25% smaller than the standard version
- Small enough for even the tiniest micro-preemies
- Can be placed anywhere on the body



Philips Micro NeoLead (989803183141)

- Size: 25 x 9.5 mm (1 x .37 in) rectangle
- Hydrocolloid edges attach to limb with no strap or band to inhibit circulation
- Radiolucent, will not appear on X-ray images
- Can monitor on patient limb or traditional chest placement

Electrode cost comparison for one patient over 30-day NICU stay*



Longevity means improved financial outcomes

Philips NeoLead electrodes feature a unique combination of hydrocolloid and hydrogel that offers lasting adhesion, staying on for between five to seven days instead of the 24 hours implemented in many hospital protocols. Longer adhesion times could allow for customers to realize a cost benefit after just three days.

* Based on replacing NeoLeads every seven days versus 24-hour replacement recommendations for standard neonatal ECG electrodes. Cumulative cost comparisons based on US list prices for Philips NeoLeads versus Philips standard neonatal ECG monitoring electrodes, as of April 2017.

Specifications

Leadwire length	60 cm (24 in)
Backing material	Soft cloth
Electrode materials	Hydrogel with hydrocolloid border
Leadwire material	Copper for metallic versions; carbon for radiolucent versions
Connector	Standard DIN
Shelf life	2 – 3 years from date of manufacture
Wearing time	5 – 7 days
X-ray compatible	Radiolucent versions only
Packaging	3 electrodes per pouch, 50 per box; sold in box quantities only


Discover how Philips medical supplies supports your focus on what matters most. Go to www.philips.com/mysupplies to find the supplies you need and to get in touch with your sales representative. If you're in the US, order with ease from www.philips.com/healthcarestore.

For more information about caring for mother and baby, please visit www.philips.com/developmentalcare

References

1. Altmier L, Phillips R. The Neonatal Integrative Developmental Care Model: Advanced Clinical Applications of the Seven Core Measures for Neuroprotective Family-centered Developmental Care. *Newborn and Infant Nursing Reviews*. Dec 2016;14(4):230–244. DOI: 10.1053/j.nainr.2016.09.030
2. Altimer L, Phillips R. The Neonatal Integrative Developmental Care Model: Seven Neuroprotective Core Measures for Family-Centered Developmental Care. *Newborn and Infant Nursing Reviews*. Mar 2013;13(1):9–22. DOI: 10.1053/j.nainr.2012.12.002

NeoLead is a registered trademark of Neotech Products, Inc.

 Philips Medical Systems
3000 Minuteman Road
Andover, MA 01810 USA

© 2020 Koninklijke Philips N.V. All rights are reserved. Philips reserves the right to make changes in specifications and/or to discontinue any product at any time without notice or obligation and will not be liable for any consequences resulting from the use of this publication. Trademarks are the property of Koninklijke Philips N.V. or their respective owners.



www.philips.com

Printed in the Netherlands.
4522 991 58741 * JUN 2020